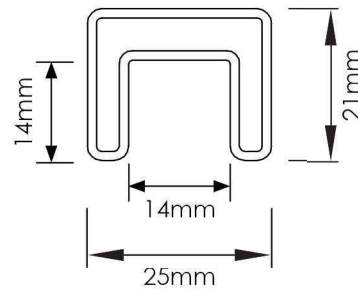


Summit Top Rail Range

Summit Nano Round Rail (25x21mm) Series

NANORAIL® 25 X 21MM HANDRAIL



2900mm RHS HANDRAIL, 25 x 21mm

Polish Or Satin Finish

Order Code: **STG-R2900-2521-P** (polish finish)
STG-R2900-2521-S (satin finish)

5800mm RHS HANDRAIL, 25 x 21mm

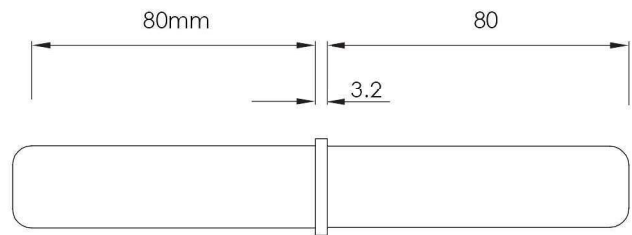
Polish Or Satin Finish

Order Code: **STG-R5800-2521-P** (polish finish)
STG-R5800-2521-S (satin finish)

SPECIFICATION

- Available in 5800mm or 2900mm lengths: Polish or Satin finish
- Slimline stylish profile – 'Nanorail' - caps over 12mm thick glass
- 1.2mm wall thickness
- 14 x 14mm glazing pocket: silicone onto glass or use in conjunction with glazing rubber
- Stainless Steel 316L - low carbon stainless

NANORAIL® 25 X 21MM JOINER



NANORAIL® JOINER

316 STAINLESS STEEL

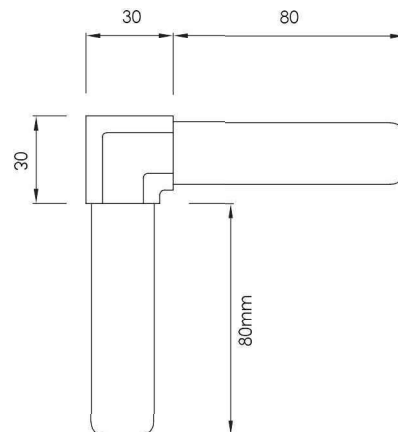
Polish Or Satin Finish

Order Code: **STG-2521-J-P** (polish finish)
STG-2521-J-S (satin finish)

SPECIFICATION

- In-line rail joiner
- Easy to use tap-in fitting: allows for increased speed of assembly
- Stainless Steel 316; High Polish or Satin finish
- Epoxy glue, weld or drill/tap tube for joining strength

NANORAIL® 25 X 21MM, 90 DEGREE JOINER



NANORAIL® 90° JOINER

316 STAINLESS STEEL

Polish Or Satin Finish

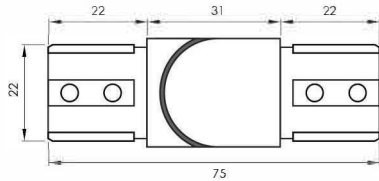
Order Code: **STG-2521-90J-P** (polish finish)
STG-2521-90J-S (satin finish)

SPECIFICATION

- 90 degree corner joiner ; easy to use tap-in fitting
- Stainless Steel 316; High Polish or Satin finish
- Epoxy glue, weld or drill/tap tube for joining strength

Summit Top Rail Range

NANORAIL® SWIVEL HORIZONTAL JOINER



NANORAIL® HORIZONTAL JOINER

316 STAINLESS STEEL

Polish Or Satin Finish

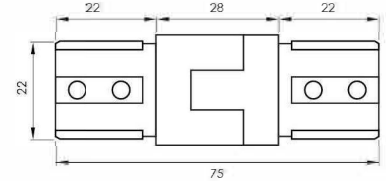
Order Code: **STG-2521-HJA-P** (polish finish)
STG-2521-HJA-S (satin finish)

**VARIABLE
ANGLE**

SPECIFICATION

- Variable angle horizontal joiner
- From straight rail, achieve up to 45 degrees left or right angle joining
- Epoxy glue, weld or drill/top tube for joining strength

NANORAIL® SWIVEL VERTICAL JOINER



NANORAIL® VERTICAL JOINER

316 STAINLESS STEEL

Polish Or Satin Finish

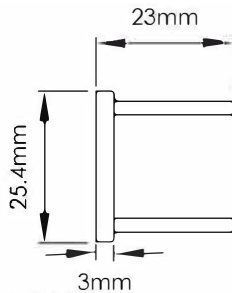
Order Code: **STG-2521-VJA-P** (polish finish)
STG-2521-VJA-S (satin finish)

**VARIABLE
ANGLE**

SPECIFICATION

- Variable angle vertical joiner
- From straight rail, achieve up to 45 degrees upwards & downwards
- Ideal for staircase installation

NANORAIL® 25 X 21MM END CAP



**NEW
ALSO AVAILABLE
SLOTTED
END CAP**



**HIDDEN
FIXING**

STG-2521-SC-P/S
(polish or satin finish)

- Includes screw with bolt head
- Rail with slotted end cap simply drops over exposed screw head providing hidden fixing

NANORAIL® END CAP

316 STAINLESS STEEL

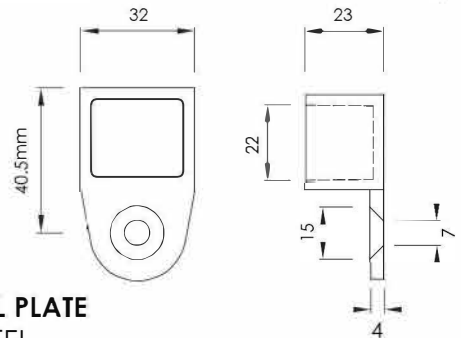
Satin Or Polish Finish

Order Code: **STG-2521-EC-P** (polish finish)
STG-2521-EC-S (satin finish)

SPECIFICATION

- End cap; easy to use tap-in fitting
- Stainless Steel 316; High Polish or Satin finish
- Epoxy glue, weld or drill/top tube for joining strength

NANORAIL® 25 X 21MM WALL PLATE



NANORAIL® WALL PLATE

316 STAINLESS STEEL

Satin Or Polish Finish

Order Code: **STG-2521-WP-P** (polish finish)
STG-2521-WP-S (satin finish)

SPECIFICATION

- Bracket can be affixed to wall/post
- 25 x 21mm tube fits into opening (female fit)
- Stainless Steel 316; High Polish or Satin finish
- Epoxy glue, weld or drill/top tube for joining strength

NANORAIL® GLAZING RUBBER



NANORAIL® GLAZING RUBBER

Order Code: **STG-SP1109-30**

SPECIFICATION

- Assists in the installation of NANORAIL to 12mm glass: suggested to use in conjunction with silicone
- Thin U profile RUBBER - 30 Metre Roll - provides for a tight fit
- Used also as a barrier between glass edge and stainless steel handrail

BOSTIK V60 GLAZING SILICONE



BOSTIK V60 TRANSLUCENT GLAZING SILICON 300G

Order Code: **FB-V60**

SPECIFICATION

- Architectural grade high performance glazing silicon
- Neutral cure sealant specially formulated; skins quickly & provides long term performance
- Excellent adhesion & flexibility
- Seals water tight - UV & weather resistant

DEVCON 2 PART EPOXY



DEVCON 2 PART EPOXY 25mL

Order Code: **AC-EPOXY**

SPECIFICATION

- Resealable syringe
- Mixing tray and stick included
- Extremely strong bonding for metal to metal

BUGLE BATTEN SCREW



BUGLE BATTEN SCREW 50MM LONG, HEX HEAD

Order Code: **FX-SS50**

SPECIFICATION

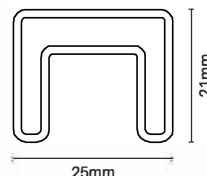
- Stainless steel 316
- 14 gauge x 50mm length with 11.5mm outer diameter head
- Ideal for timber fixing the wall plate

NEW!



NANORAIL MATT BLACK

POWDERCOATED STAINLESS STEEL 316



5800mm RHS Nanorail® handrail

25X21MM - SS316L

Matt black finish

Order Code: **STG-R5800-2521-B**

- 5800mm long
- Slimline profile - caps over 12mm thick glass
- 1.2mm wall thickness
- 14x14mm glazing pocket - silicone onto glass or use with glazing rubber
- Low carbon SS316L

FULL RANGE OF FITTINGS ALSO AVAILABLE



Inline joiner
STG-2521-J-B



90° joiner
STG-2521-90J-B



Vertical joiner
STG-2521-VERTJ-B



Swivel vertical joiner
STG-2521-VJA-B



Swivel horizontal joiner
STG-2521-HJA-B



End cap
STG-2521-EC-B



Wall plate
STG-2521-WP-B

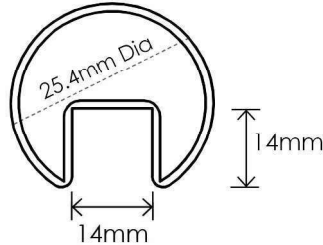


Extended wall plate
STG-2521-WPEXT-B

Summit Top Rail Range

Summit Nano Hand Rail (25.4mm) Series

NANOROUND 25.4MM DIAMETER HANDRAIL



2900mm CHS HANDRAIL, 25.4mm Dia Polish Or Satin Finish

Order Code: **STG-C2900-25.4D-P** (polish finish)
STG-C2900-25.4D-S (satin finish)

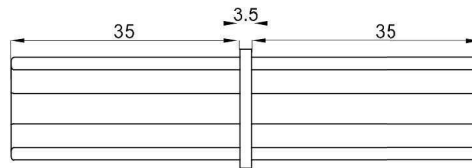
5800mm CHS HANDRAIL, 25.4mm Dia Polish Or Satin Finish

Order Code: **STG-C5800-25.4D-P** (polish finish)
STG-C5800-25.4D-S (satin finish)

SPECIFICATION

- Available in 5800mm or 2900mm lengths; High Polish or Satin finish
- Slimline 25.4mm stylish profile – 'Nanoround' - caps over 12mm thick glass
- 1.5mm wall thickness
- 14 x 14mm glazing pocket: silicone onto glass or use in conjunction with glazing rubber
- Stainless Steel 316L - low carbon stainless

NANOROUND 25.4MM DIA JOINER



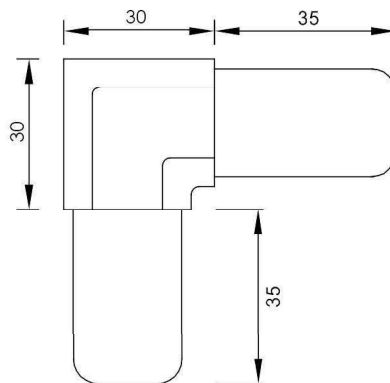
NANOROUND JOINER 316 STAINLESS STEEL Satin Or Polish Finish

Order Code: **STG-25.4D-J-P** (polish finish)
STG-25.4D-J-S (satin finish)

SPECIFICATION

- In-line rail joiner
- Easy to use tap-in fitting: allows for increased speed of assembly
- Stainless Steel 316
- Epoxy glue, weld or drill/tap tube for joining strength

NANOROUND 25.4MM DIA, 90 DEGREE JOINER



NANOROUND 90 DEGREE JOINER 316 STAINLESS STEEL Satin Or Polish Finish

Order Code: **STG-25.4D-90J-P** (polish finish)
STG-25.4D-90J-S (satin finish)

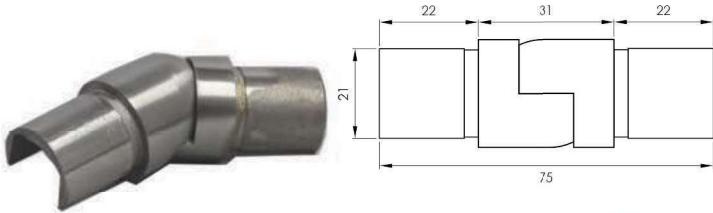
SPECIFICATION

- 90 degree rail joiner
- Easy to use tap-in fitting: allows for increased speed of assembly
- Stainless Steel 316
- Epoxy glue, weld or drill/tap tube for joining strength

NOTE: ALL DRAWINGS ARE NOT TO SCALE

Summit Top Rail Range

NANOROUND 25.4MM DIA HORIZONTAL SWIVEL JOINER



NANOROUND HORIZONTAL JOINER 316 STAINLESS STEEL Satin Or Polish Finish

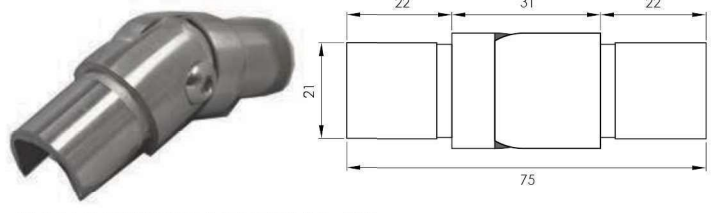
Order Code: **STG-25.4D-HJA-P** (polish finish)
STG-25.4D-HJA-S (satin finish)

**VARIABLE
ANGLE**

SPECIFICATION

- Variable angle horizontal joiner
- From straight rail, achieve up to 45 degree left or right angle joining
- Epoxy glue, weld or drill/top tube for joining strength

NANOROUND 25.4MM DIA VERTICAL SWIVEL JOINER



NANOROUND VERTICAL JOINER 316 STAINLESS STEEL Satin Or Polish Finish

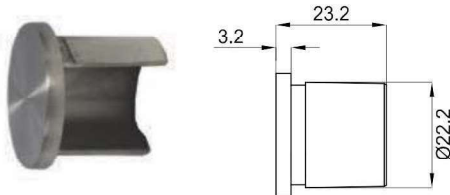
Order Code: **STG-25.4D-VJA-P** (polish finish)
STG-25.4D-VJA-S (satin finish)

**VARIABLE
ANGLE**

SPECIFICATION

- Variable angle vertical joiner
- From straight rail, achieve up to 45 degrees upwards & downwards
- Ideal for staircase installation
- Epoxy glue, weld or drill/top tube for joining strength

NANOROUND 25.4MM DIA END CAP



NOT TO SCALE

NANOROUND END CAP 316 STAINLESS STEEL Satin Or Polish Finish

Order Code: **STG-25.4D-EC-P** (polish finish)
STG-25.4D-EC-S (satin finish)

SPECIFICATION

- End cap; easy to use tap-in fitting
- Stainless Steel 316
- Epoxy glue, weld or drill/top tube for joining strength

NEW
ALSO AVAILABLE
SLOTTED
END CAP



HIDDEN
FIXING

STG-25.4D-SC-P/S
(polish or satin finish)

- Includes screw with bolt head
- Rail with slotted end cap simply drops over exposed screw head providing hidden fixing

NANOROUND 25.4MM DIA WALL PLATE



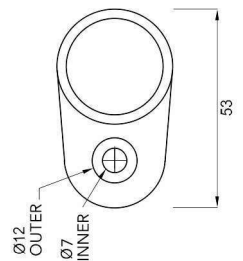
NOT TO SCALE

NANOROUND WALL PLATE 316 STAINLESS STEEL Satin Or Polish Finish

Order Code: **STG-25.4D-WP-P** (polish finish)
STG-25.4D-WP-S (satin finish)

SPECIFICATION

- Bracket can be affixed to wall/post
- 25.4mm tube fits into opening (female fit)
- Stainless Steel 316
- Epoxy glue, weld or drill/top tube for joining strength



NANOROUND GLAZING RUBBER



NANOROUND GLAZING RUBBER Order Code: **STG-SP1109-30**

SPECIFICATION

- Assists in the installation of NANOROUND to 12mm glass: suggested to use in conjunction with silicone
- Thin U profile RUBBER - 30 Metre Roll - provides for a tight fit
- Used also as a barrier between glass edge and stainless steel rail

BOSTIK V60 GLAZING SILICONE



BOSTIK V60 TRANSLUCENT GLAZING SILICONE 300G

Order Code: **FB-V60**

SPECIFICATION

- Architectural grade high performance glazing silicone
- Neutral cure sealant specially formulated; skins quickly & provides long term performance
- Excellent adhesion & flexibility
- Seals water tight - UV & weather resistant

DEVCON 2 PART EPOXY



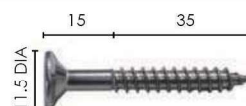
DEVCON 2 PART EPOXY 25mL

Order Code: **DEV-EPOXY**

SPECIFICATION

- Resealable syringe
- Mixing tray and stick included
- Extremely strong bonding for metal to metal

BUGLE BATTEN SCREW



BUGLE BATTEN SCREW 50MM LONG, HEX HEAD Order Code: **CSK-050**

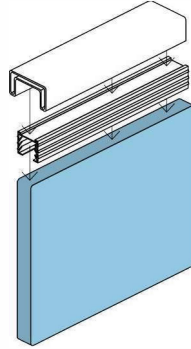
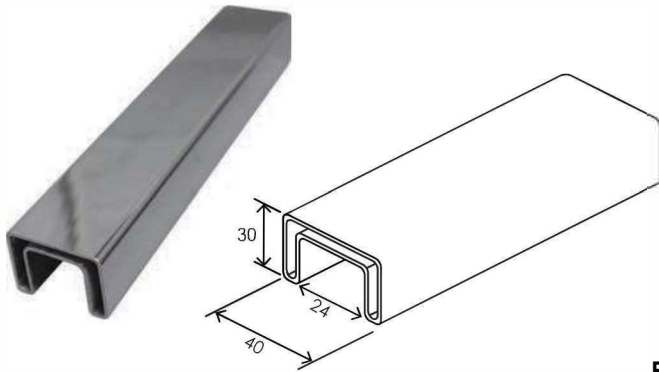
SPECIFICATION

- Stainless steel 316
- 14 gauge x 50mm length with 11.5mm outer diameter head
- Ideal for timber fixing the wall plate

Summit Top Rail Range

Summit Grip rail (40x30mm) Series

GRIPRAIL® 40 X 30MM HANDRAIL



SPECIFICATION

- Available in 5800 or 2900mm lengths; High Polish or Satin finish
- Stylish slimline 40mm wide x 30mm high profile
- 1.5mm wall thickness
- 24 x 24mm glazing pocket: special glazing rubber holds fast to glass & rail
- Stainless Steel 316L - low carbon stainless

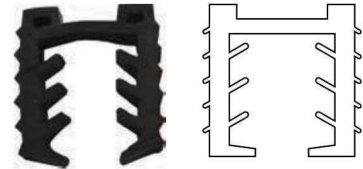
FAST & EASY GLAZING

5800mm GRIPRAIL® HANDRAIL, 40 x 30mm Polish Or Satin Finish

Order Code: **STG-R5800-4030-P** (polish finish)

STG-R5800-4030-S (satin finish)

GRIPRAIL® RUBBER



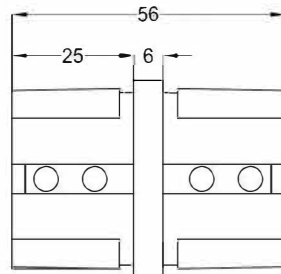
40 x 30mm GRIPRAIL® RUBBER

Order Code: **STG-4030-GR**

SPECIFICATION

- 6 metre lengths
- Special interior ribs secure glass to rail
- Fast and easy glazing : provides a perfect finish
- Also used as a barrier between glass edge and stainless steel rail
- Suits 12mm thick glass only

GRIPRAIL® JOINER



40 x 30mm GRIPRAIL® JOINER Polish Or Satin Finish

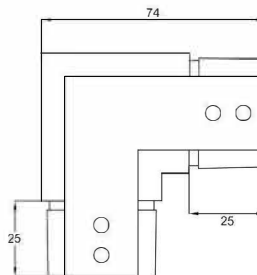
Order Code: **STG-4030-J-P** (polish finish)

STG-4030-J-S (satin finish)

SPECIFICATION

- In-line rail joiner
- Easy to use tap-in fitting; allows for increased speed of assembly
- Stainless Steel 316
- Epoxy glue, weld or drill/tap tube for joining strength

GRIPRAIL® 90 DEGREE JOINER



40 x 30mm GRIPRAIL® 90° JOINER Polish Or Satin Finish

Order Code: **STG-4030-90J-P** (polish finish)

STG-4030-90J-S (satin finish)

SPECIFICATION

- 90 degree corner joiner; easy to use tap-in fitting
- Stainless Steel 316
- Epoxy glue, weld or drill/tap tube for joining strength

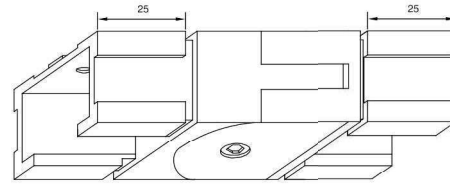
NOTE: ALL DRAWINGS ARE NOT TO SCALE

Summit Top Rail Range

GRIPRAIL® SWIVEL HORIZONTAL JOINER



**VARIABLE
ANGLE**



40 x 30mm GRIPRAIL® HORIZONTAL JOINER Polish Or Satin Finish

Order Code: **STG-4030-HJA-P** (polish finish)
STG-4030-HJA-S (satin finish)

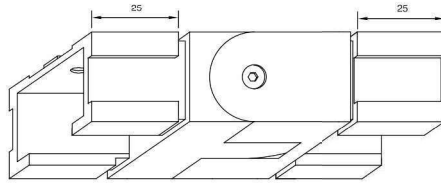
SPECIFICATION

- Variable angle horizontal joiner ; easy to use tap-in fitting
- From straight rail, achieve up to 45 degrees angle joining
- Stainless Steel 316
- Epoxy glue, weld or drill/tap tube for joining strength

GRIPRAIL® SWIVEL VERTICAL JOINER



**VARIABLE
ANGLE**



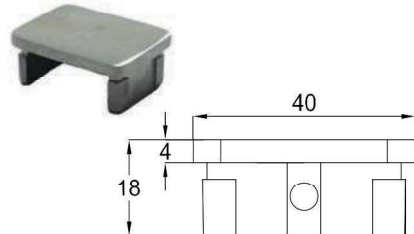
40 x 30mm GRIPRAIL® VERTICAL JOINER Polish Or Satin Finish

Order Code: **STG-4030-VJA-P** (polish finish)
STG-4030-VJA-S (satin finish)

SPECIFICATION

- Variable angle vertical joiner; easy to use tap-in fitting
- From straight rail, achieve up to 45 degrees upwards & downwards
- Stainless Steel 316
- Epoxy glue, weld or drill/tap tube for joining strength

GRIPRAIL® END CAP



40 x 30mm GRIPRAIL® END CAP Polish Or Satin Finish

Order Code: **STG-4030-EC-P** (polish finish)
STG-4030-EC-S (satin finish)

SPECIFICATION

- End cap; easy to use tap-in fitting
- Stainless Steel 316
- Epoxy glue, weld or drill/tap tube for joining strength

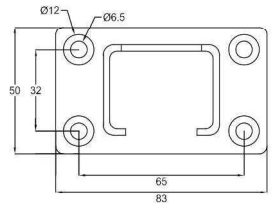
**NEW
ALSO AVAILABLE
SLOTTED
END CAP**



**HIDDEN
FIXING**

STG-4030-SC-P/S
(polish or satin finish)
• Includes screw with
bolt head
• Rail with slotted end
cap simply drops over
exposed screw head
providing hidden fixing

GRIPRAIL® WALL PLATE



40 X 30mm GRIPRAIL® WALL PLATE Polish Or Satin Finish

Order Code: **STG-4030-WP-P** (polish finish)
STG-4030-WP-S (satin finish)

SPECIFICATION

- Bracket can be affixed to wall/post
- 40 x 30mm rail fits into 30mm deep opening (female fit)
- Stainless Steel 316
- Epoxy glue, weld or drill/tap tube for joining strength

DEVCON 2 PART EPOXY



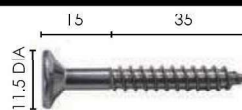
DEVCON 2 PART EPOXY 25mL

Order Code: **DEV-EPOXY**

SPECIFICATION

- Resealable syringe
- Mixing tray and stick included
- Extremely strong bonding for metal to metal

BUGLE BATTEN SCREW



BUGLE BATTEN SCREW 50MM LONG, HEX HEAD

Order Code: **CSK-050**

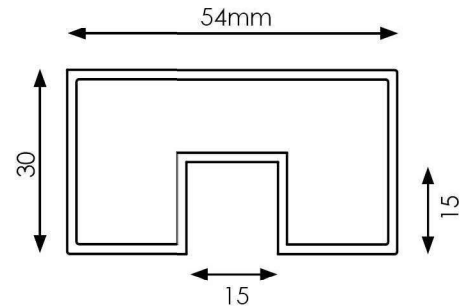
SPECIFICATION

- Stainless steel 316
- 14 gauge x 50mm length with 11.5mm outer diameter head
- Ideal for timber fixing the wall plate

Summit Top Rail Range

Summit RHS Handrail (54 x 30mm) Range

SUMMIT RHS 54 X 30MM HANDRAIL



2900mm RHS HANDRAIL 54 x 30mm Polish Or Satin Finish

Order Code: **STG-R2900-5430-P** (polish finish)
STG-R2900-5430-S (satin finish)

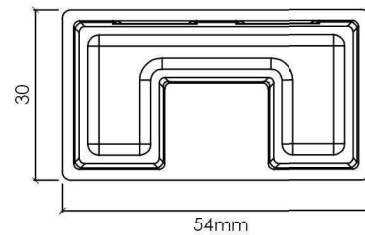
5800mm RHS HANDRAIL, 54 x 30mm Polish Or Satin Finish

Order Code: **STG-R5800-5430-P** (polish finish)
STG-R5800-5430-S (satin finish)

SPECIFICATION

- Available in 5800 or 2900mm lengths; High Polish or Satin finish
- Robust 54mm wide x 30mm high rail
- 1.5mm wall thickness
- 15 x 15mm glazing pocket: silicone onto glass or use in conjunction with glazing rubber
- Stainless Steel 316L - low carbon stainless

SUMMIT 54 X 30MM JOINER



SUMMIT 54 x 30mm JOINER

316 STAINLESS STEEL

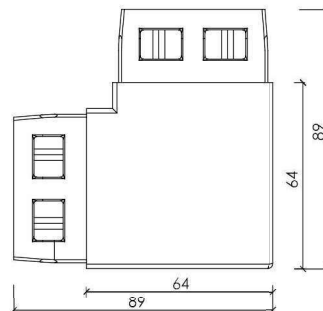
Satin Or Polish Finish

Order Code: **STG-5430-J-P** (polish finish)
STG-5430-J-S (satin finish)

SPECIFICATION

- In-line rail joiner
- Easy to use tap-in fitting: allows for increased speed of assembly
- Stainless Steel 316
- Epoxy glue, weld or drill/tap tube for joining strength

SUMMIT 54 X 30MM 90 DEGREE JOINER



SUMMIT 54 x 30mm 90 DEGREE JOINER

316 STAINLESS STEEL

Satin Or Polish Finish

Order Code: **STG-5430-90J-P** (polish finish)
STG-5430-90J-S (satin finish)

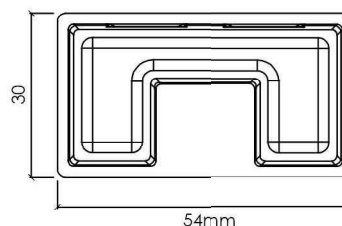
SPECIFICATION

- 90 degree corner joiner ; easy to use tap-in fitting
- Stainless Steel 316
- Epoxy glue, weld or drill/tap tube for joining strength

NOTE: ALL DRAWINGS ARE NOT TO SCALE

Summit Top Rail Range

SUMMIT 54 X 30MM END CAP



SUMMIT 54 x 30mm END CAP

316 STAINLESS STEEL

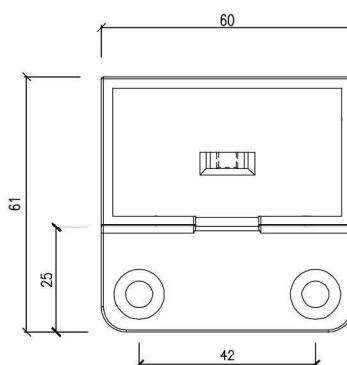
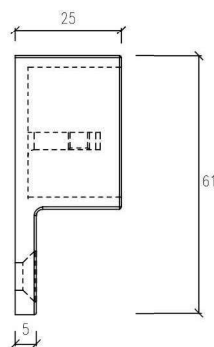
Satin Or Polish Finish

Order Code: **STG-5430-EC-P** (polish finish)
STG-5430-EC-S (satin finish)

SPECIFICATION

- End cap; easy to use tap-in fitting
- Stainless Steel 316
- Epoxy glue, weld or drill/tap tube for joining strength

SUMMIT 54 X 30MM WALL PLATE



Consider CSK-050 for timber fix

Bugle Batten Screw
50mm long (hex drive head)

- Stainless steel 316
- 14 gauge x 50mm length with 11.5mm outer diameter head
- Ideal for fixing wall bracket to timber

SUMMIT 54 x 30mm WALL PLATE

316 STAINLESS STEEL

Satin Or Polish Finish

Order Code: **STG-5430-WP-P** (polish finish)
STG-5430-WP-S (satin finish)

SPECIFICATION

- Bracket can be affixed to wall/post
- 54 x 30mm rail fits into opening (female fit)
- Stainless Steel 316
- Epoxy glue, weld or drill/tap tube for joining strength

SUMMIT GLAZING RUBBER



STG-SP1097



STG-SP1103

SUMMIT GLAZING RUBBER

Order Code: **STG-SP1097** (for polish handrail)
STG-SP1103 (for satin handrail)

SPECIFICATION

- Assists in the installation of 38mm diameter & 54 x 30 rectangular slotted handrail; suggested to use in conjunction with silicone
- Thin U profile RUBBER - 75 metre roll - provides for a tight fit
- Used also as a barrier between glass edge and stainless steel rail
- Suits 12mm thick glass only

BOSTIK V60 GLAZING SILICONE



BOSTIK V60 TRANSLUCENT GLAZING SILICONE 300G

Order Code: **FB-V60**

SPECIFICATION

- Architectural grade high performance glazing sil
- Neutral cure sealant specially formulated; skins quickly & provides long term performance
- Excellent adhesion & flexibility
- Seals water tight - UV & weather resistant

DEVCON 2 PART EPOXY



DEVCON 2 PART EPOXY 25mL

Order Code: **DEV-EPOXY**

SPECIFICATION

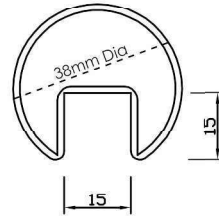
- Resealable syringe
- Mixing tray and stick included
- Extremely strong bonding for metal to metal

NOTE: ALL DRAWINGS ARE NOT TO SCALE

Summit Top Rail Range

Summit Slimline Round Hand Rail (38mm) Range

SUMMIT CHS 38MM DIA HANDRAIL



2900mm CHS ROUND HANDRAIL, 38mm DIA Polish Or Satin Finish

Order Code: **STG-C2900-38D-P** (polish finish)
STG-C2900-38D-S (satin finish)

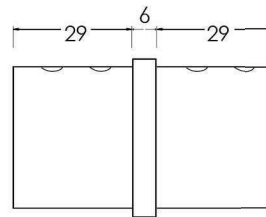
5800mm CHS ROUND HANDRAIL, 38mm DIA Polish Or Satin Finish

Order Code: **STG-C5800-38D-P** (polish finish)
STG-C5800-38D-S (satin finish)

SPECIFICATION

- Available in 5800 or 2900mm lengths; High Polish or Satin finish
- 1.5mm wall thickness
- 15 x 15mm glazing pocket: Silicone onto glass or use in conjunction with glazing rubber
- Stainless Steel 316L - low carbon stainless

SUMMIT CHS 38MM DIAMETER JOINER



SUMMIT 38mm DIA JOINER

316 STAINLESS STEEL

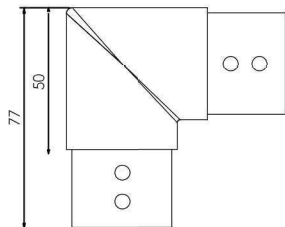
Satin Or Polish Finish

Order Code: **STG-38D-J-P** (polish finish)
STG-38D-J-S (satin finish)

SPECIFICATION

- In-line rail joiner
- Easy to use tap-in fitting: allows for increased speed of assembly
- Stainless Steel 316
- Epoxy glue, weld or drill/tap tube for joining strength

SUMMIT CHS 38MM DIAMETER 90 DEGREE JOINER



SUMMIT 38mm DIA 90° JOINER

316 STAINLESS STEEL

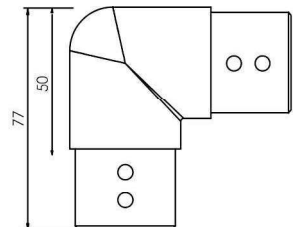
Satin Or Polish Finish

Order Code: **STG-38D-90J-P** (polish finish)
STG-38D-90J-S (satin finish)

SPECIFICATION

- 90 degree corner joiner; easy to use tap-in fitting
- Stainless Steel 316
- Epoxy glue, weld or drill/tap tube for joining strength

SUMMIT CHS 38MM DIAMETER RADIUS CORNER JOINER



SUMMIT 38mm DIA RADIUS CORNER JOINER

316 STAINLESS STEEL

Satin Or Polish Finish

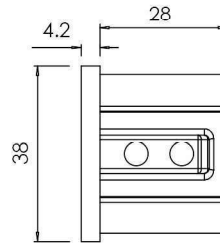
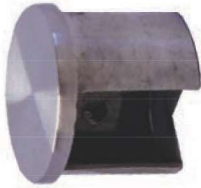
Order Code: **STG-38D-VJ-P** (polish finish)
STG-38D-VJ-S (satin finish)

SPECIFICATION

- 90 degree RADIUS corner joiner; easy to use tap-in fitting
- Stainless Steel 316
- Epoxy glue, weld or drill/tap tube for joining strength

Summit Top Rail Range

SUMMIT CHS 38MM DIAMETER END CAP



SUMMIT 38mm DIA END CAP

316 STAINLESS STEEL

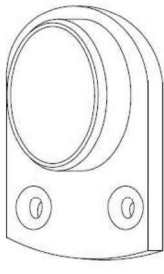
Satin Or Polish Finish

Order Code: **STG-38D-EC-P** (polish finish)
STG-38D-EC-S (satin finish)

SPECIFICATION

- End cap; easy to use tap-in fitting
- Stainless Steel 316
- Epoxy glue, weld or drill/tap tube for joining strength

SLIMLINE FLANGE SUMMIT 38MM DIA WALL PLATE



Front Elevation



38mm DIA SLIMLINE WALL PLATE

316 STAINLESS STEEL

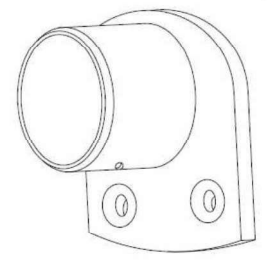
Satin Or Polish Finish

Order Code: **FB-38D-WP-P** (polish finish)
FB-38D-WP-S (satin finish)

SPECIFICATION

- Slimline bracket can be affixed to wall/post
- 38mm tube fits into 10mm deep opening (female fit)
- Stainless Steel 316
- Epoxy glue, weld or drill/tap tube for joining strength

EXTENDED FLANGE SUMMIT 38MM DIA WALL PLATE



Front Elevation

38mm DIA EXTENDED WALL PLATE

316 STAINLESS STEEL

Satin Or Polish Finish

Order Code: **FB-38D-WP25-P** (polish finish)
FB-38D-WP25-S (satin finish)

SPECIFICATION

- EXTENDED mouth bracket can be affixed to wall/post
- 38mm tube fits into opening 25mm deep (female fit)
- Stainless Steel 316
- Epoxy glue, weld or drill/tap tube for joining strength

SUMMIT GLAZING RUBBER



STG-SP1097



STG-SP1103

SUMMIT GLAZING RUBBER

Order Code: **STG-SP1097** (for polish handrail)
STG-SP1103 (for satin handrail)

SPECIFICATION

- Assists in the installation of 38mm diameter & 54 x 30 rectangular slotted handrail: suggested to use in conjunction with silicone
- Thin U profile RUBBER - 75 metre roll - provides for a tight fit
- Used also as a barrier between glass edge and stainless steel rail
- Suits 12mm thick glass only

BOSTIK V60 GLAZING SILICONE



BOSTIK V60 TRANSLUCENT GLAZING SILICONE 300G

Order Code: **FB-V60**

SPECIFICATION

- Architectural grade high performance glazing silicone
- Neutral cure sealant specially formulated; skins quickly & provides long term performance
- Excellent adhesion & flexibility
- Seals water tight - UV & weather resistant

DEVCON 2 PART EPOXY



DEVCON 2 PART EPOXY 25mL

Order Code: **DEV-EPOXY**

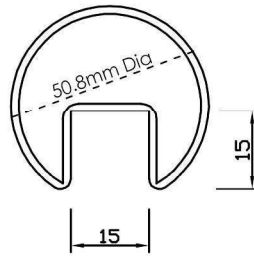
SPECIFICATION

- Resealable syringe
- Mixing tray and stick included
- Extremely strong bonding for metal to metal

Summit Top Rail Range

Summit Round Hand rail (50.8mm) Series

SLOT 50 - ROUND SLOTTED 50.8MM DIA HANDRAIL



5800mm CHS ROUND HANDRAIL, 50.8mm DIA Polish Finish

Order Code: **SLOT50-5000-1W-P** (polish finish)

SPECIFICATION

- Available in 5800 length; High Polish finish
- 1.5mm wall thickness
- 15 x 15mm glazing pocket: Silicone onto glass or use in conjunction with glazing rubber
- Stainless Steel 316L - Low carbon stainless

SLOT 50 - 50.8MM DIAMETER INLINE JOINER



SLOT 50 INLINE JOINER Polish Finish

Order Code: **SLOT50-J-P** (polish finish)

SPECIFICATION

- Stainless Steel 316
- Epoxy glue, weld or drill/tap tube for joining strength

SLOT 50 - 50.8MM DIAMETER 90 DEGREE JOINER



SLOT 50 90 DEGREE JOINER Polish Finish

Order Code: **SLOT50-J90-P** (polish finish)

SPECIFICATION

- Stainless Steel 316
- Epoxy glue, weld or drill/tap tube for joining strength

SLOT 50 - 50.8MM DIAMETER FLAT END CAP



SLOT 50 FLAT END CAP Polish Finish

Order Code: **SLOT50-EC-P** (polish finish)

SPECIFICATION

- Stainless Steel 316
- Epoxy glue, weld or drill/tap tube for joining strength

EXTENDED FLANGE SLOT 50 - 50.8MM DIA. WALL PLATE



EXTENDED FLANGE WALL PLATE Polish Finish

Order Code: **FB-50D-WP25-P** (polish finish)

SPECIFICATION

- EXTENDED mouth bracket can be affixed to wall/post
- 50.8mm tube fits into opening 25mm deep (female fit)
- Stainless Steel 316
- Epoxy glue, weld or drill/tap tube for joining strength

STAINLESS STEEL HANDRAIL

FOR GLAZING RUBBER, EPOXY & SILICONE REFER TO PAGE 12